



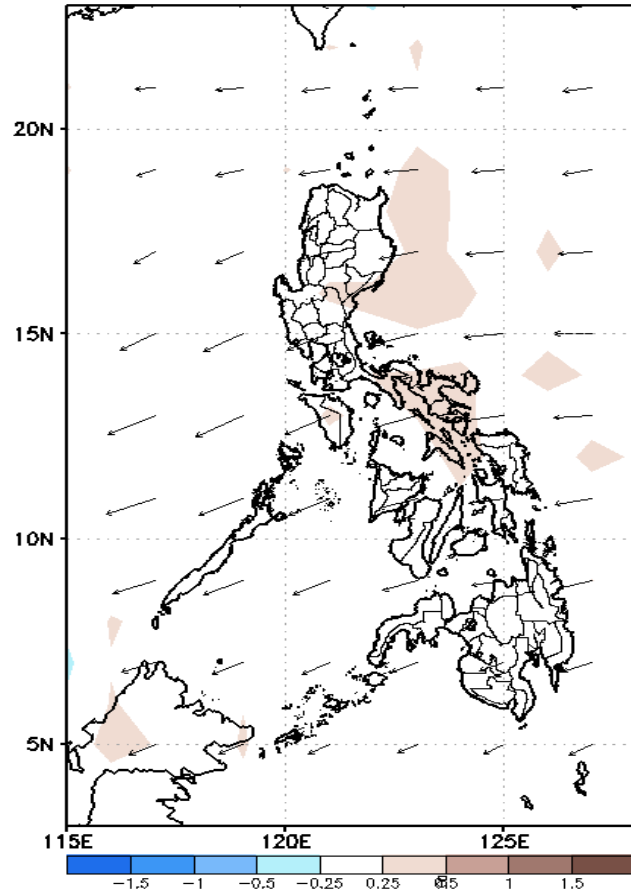
# Week 1 & Week 2 Forecast for the Philippines using GEFS Model



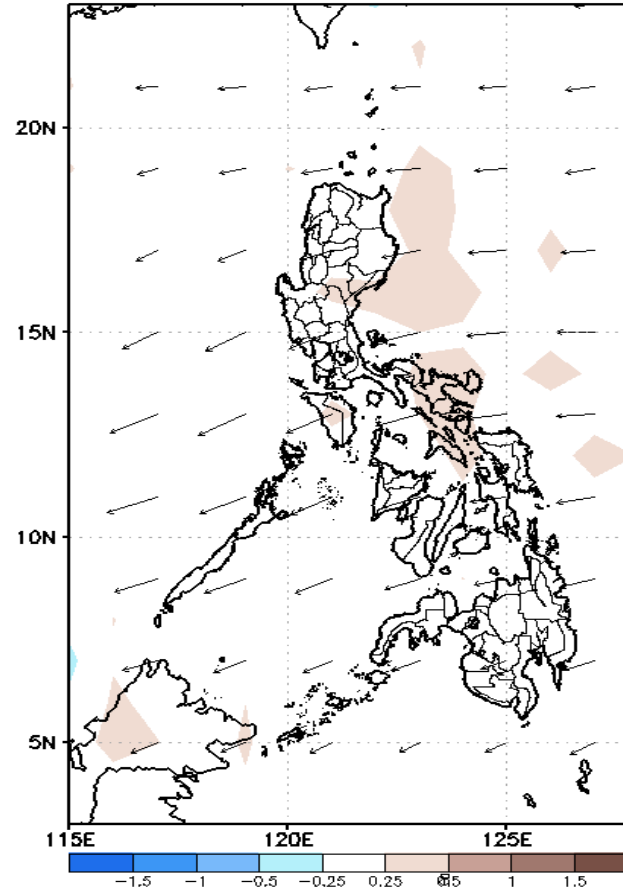
# GEFS Week-1 Forecasts: Divergence & Wind Anomaly

**Week 1: Sep 02-08, 2021**

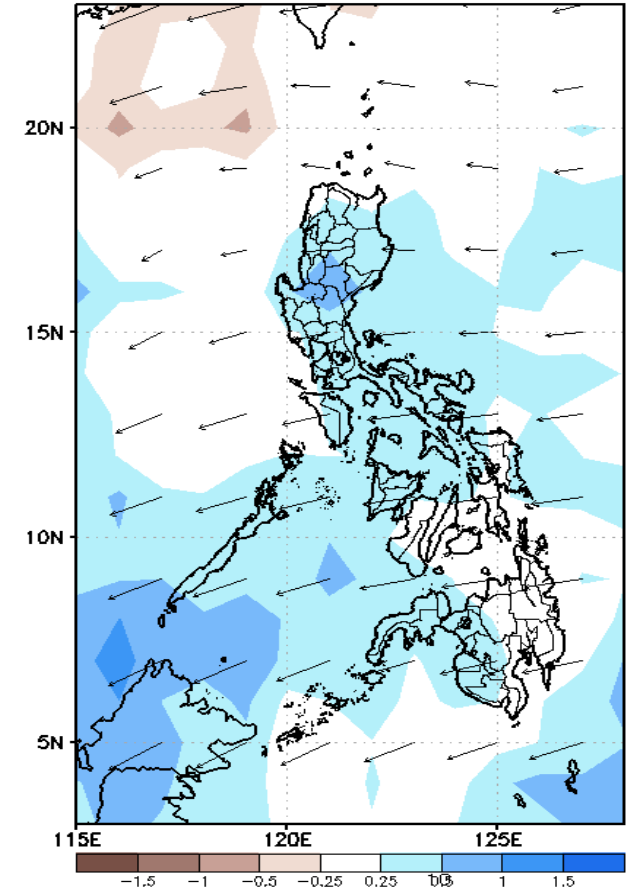
GEFS Week-1 850-hPa Divergence and Wind Anom  
Valid: 20210902 - 20210908



GEFS Week-1 700-hPa Divergence and Wind Anom  
Valid: 20210902 - 20210908



GEFS Week-1 200-hPa Divergence and Wind Anom  
Valid: 20210902 - 20210908

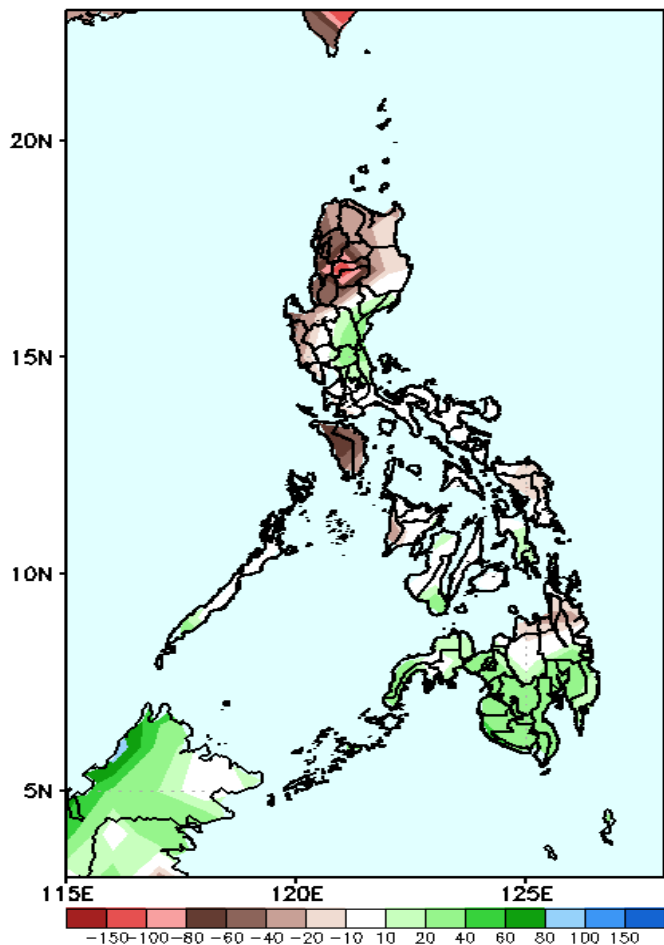


Upper and low level Divergence suggest likelihood of light precipitation in most parts of the country(except Eastern Mindanao). Southwest monsoon affecting some parts of Luzon and Visayas. Easterlies affecting the rest of the country attributing to light or moderate rains due to thunderstorms during the forecast period.

# Precipitation Anomaly and Exceedance Probability > 25/50 mm

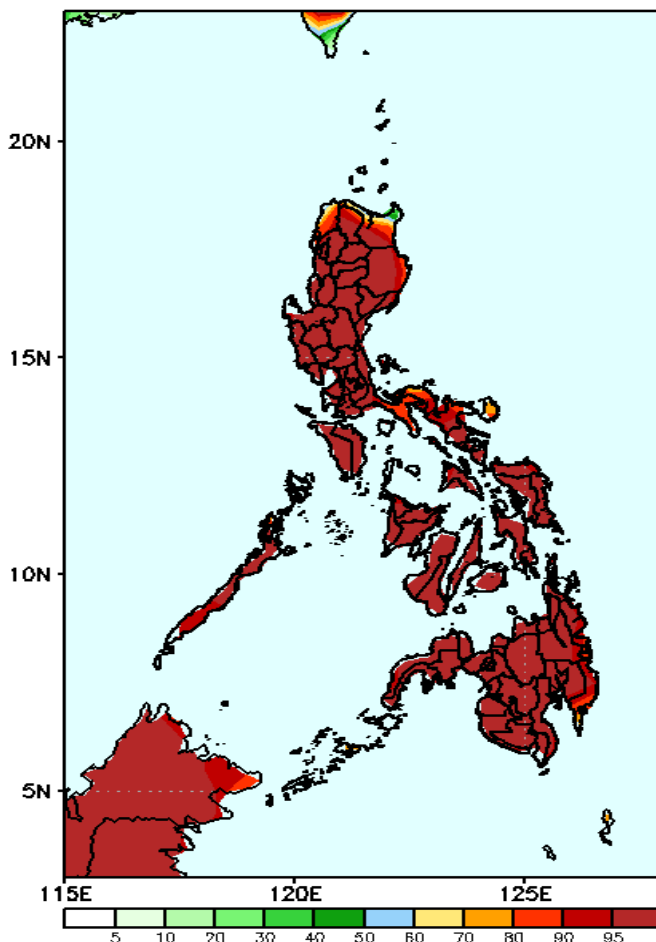
**Week 1: Sep 02-08, 2021**

GEFS Week-1 Precip Anomaly  
Valid: 20210902 - 20210908



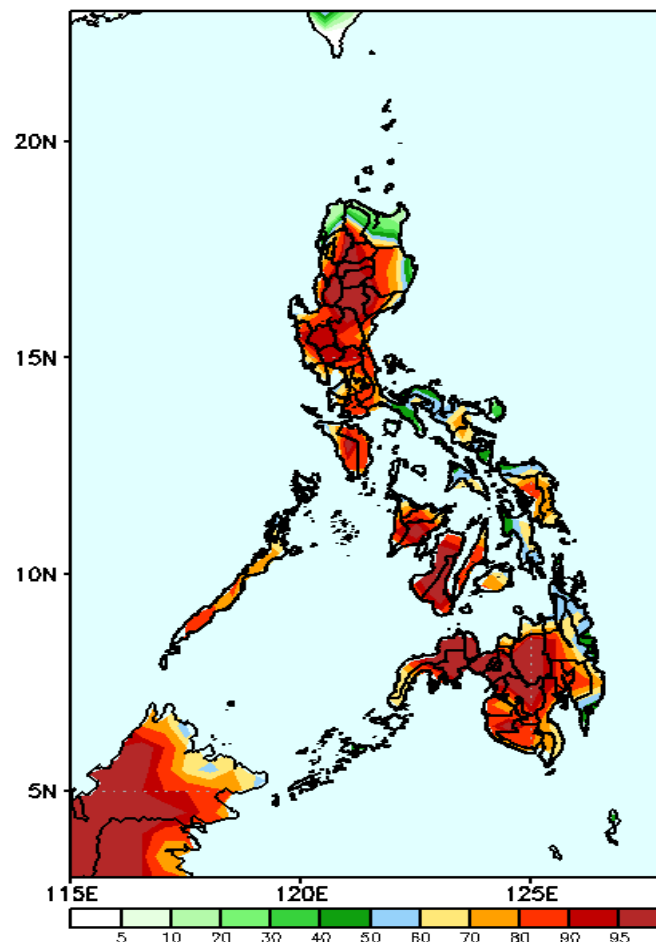
Rainfall deficit of 60-150mm is expected in Ilocos & Cordillera Region and Mindoro while increase of rainfall of 20-60mm in southeastern parts of Luzon and most parts of Mindanao during the forecast period.

GEFS Week-1 Exceedance Prob. > 25mm  
Valid: 20210902 - 20210908



High probability of rainfall to exceed 25mm in most parts of the country is expected during the forecast period.

GEFS Week-1 Exceedance Prob. > 50mm  
Valid: 20210902 - 20210908



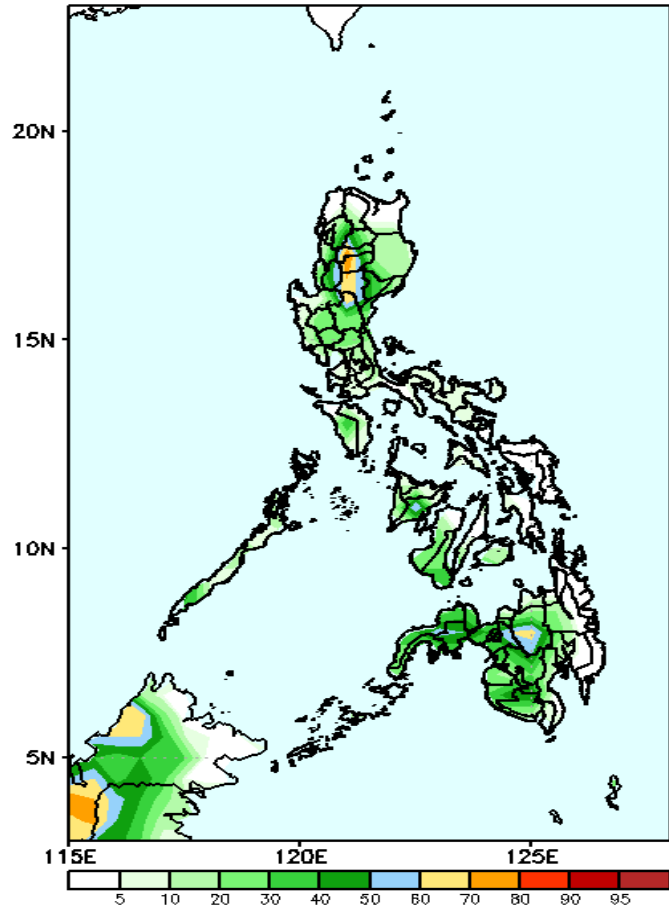
High probability of rainfall to exceed 50mm in most parts of the country during the forecast period.



# Exceedance Probability > 100/150/200 mm

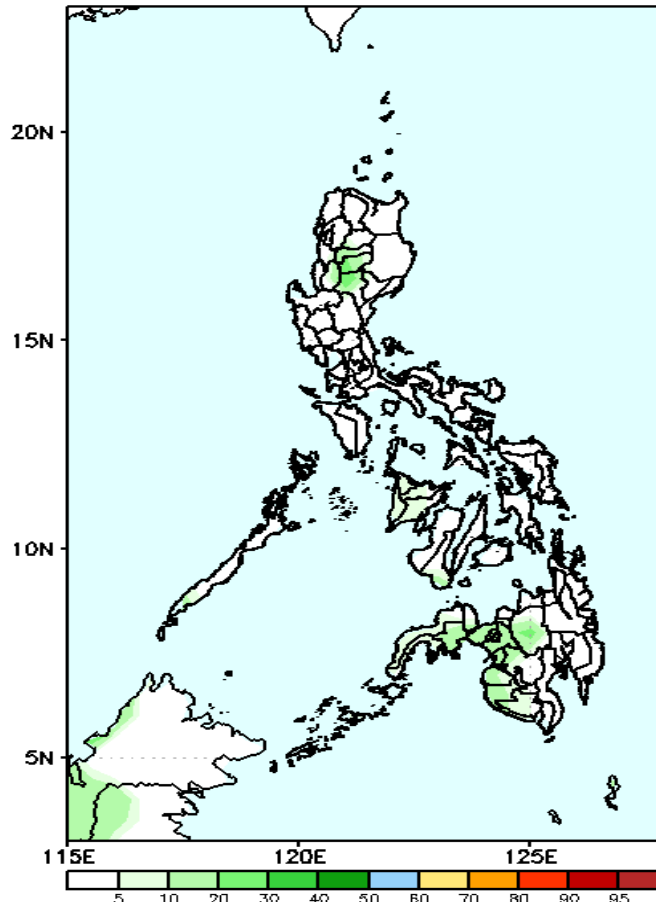
## Week 1: Sep 02-08, 2021

GEFS Week-1 Exceedance Prob. > 100mm  
Valid: 20210902 - 20210908



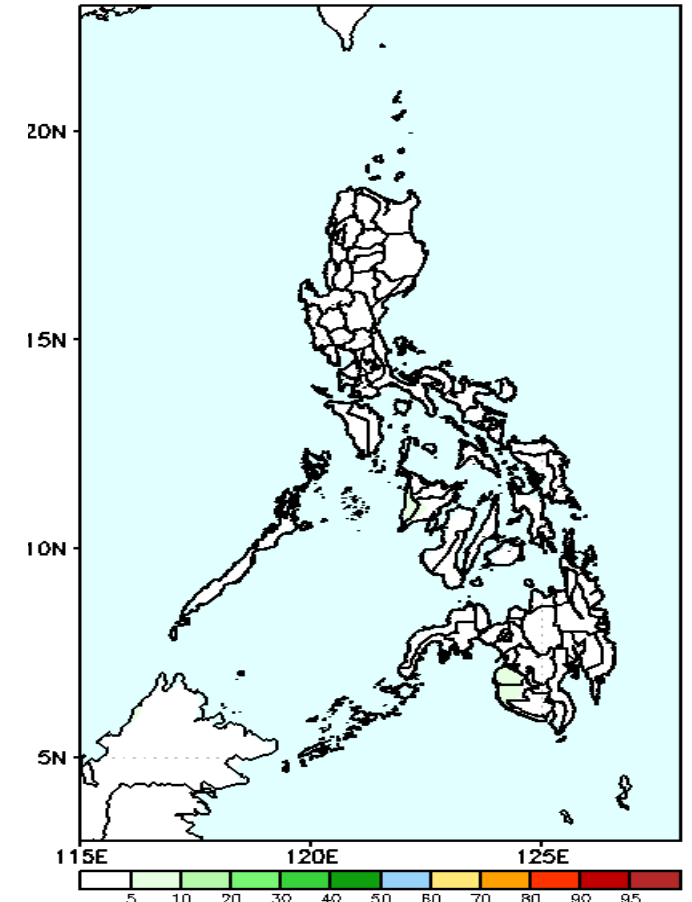
Less probability of rainfall to exceed 100mm in most parts of the country is expected except in some areas in Cordillera Region where there is 60-90% chance during the forecast period.

GEFS Week-1 Exceedance Prob. > 150mm  
Valid: 20210902 - 20210908



Less probability of rainfall to exceed 150mm in most parts of the country is expected during the forecast period.

GEFS Week-1 Exceedance Prob. > 200mm  
Valid: 20210902 - 20210908



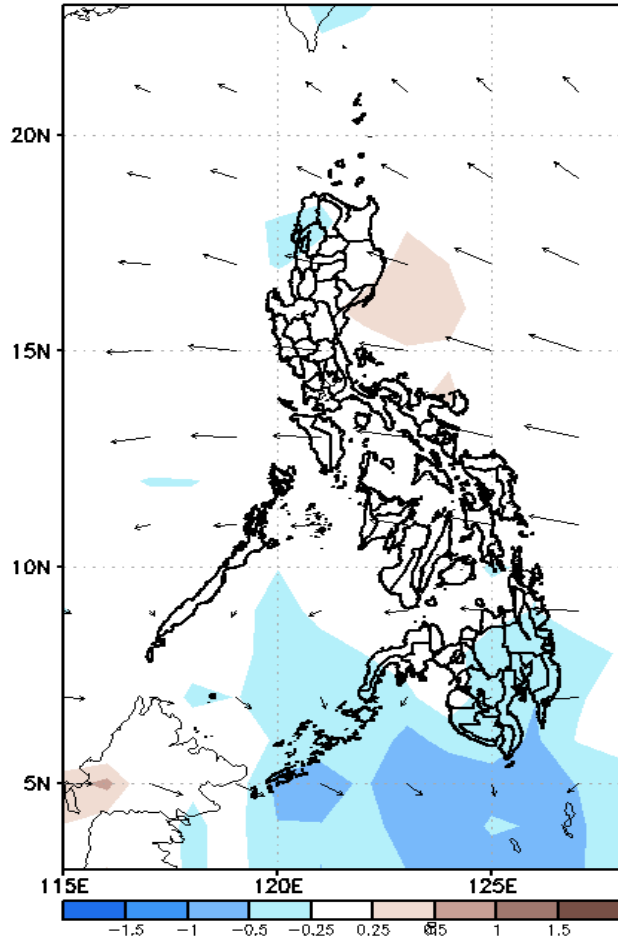
Less probability of rainfall to exceed 200mm in most parts of the country is expected during the forecast period.



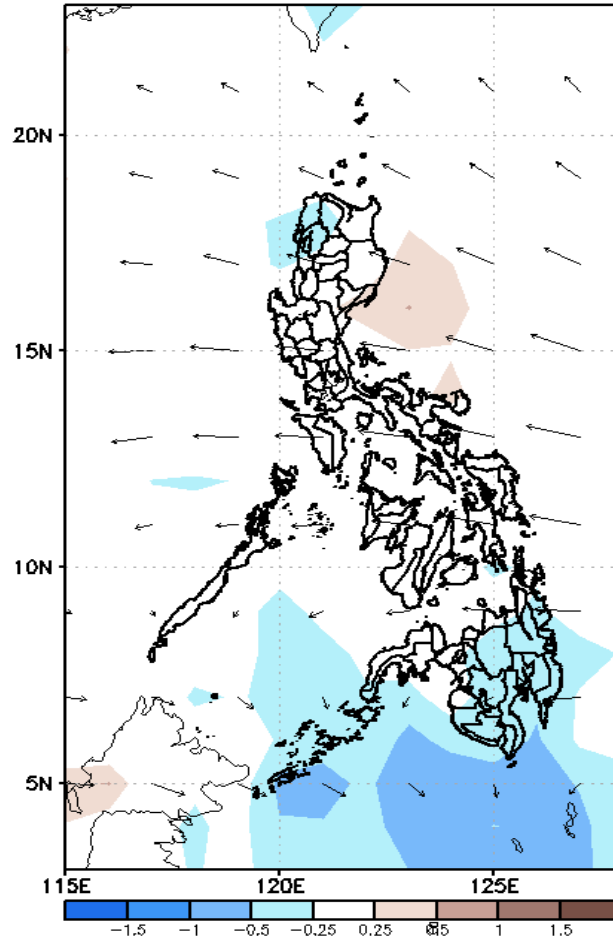
# GEFS Week-2 Forecasts: Divergence & Wind Anomaly

Week 2: Sep 09-15, 2021

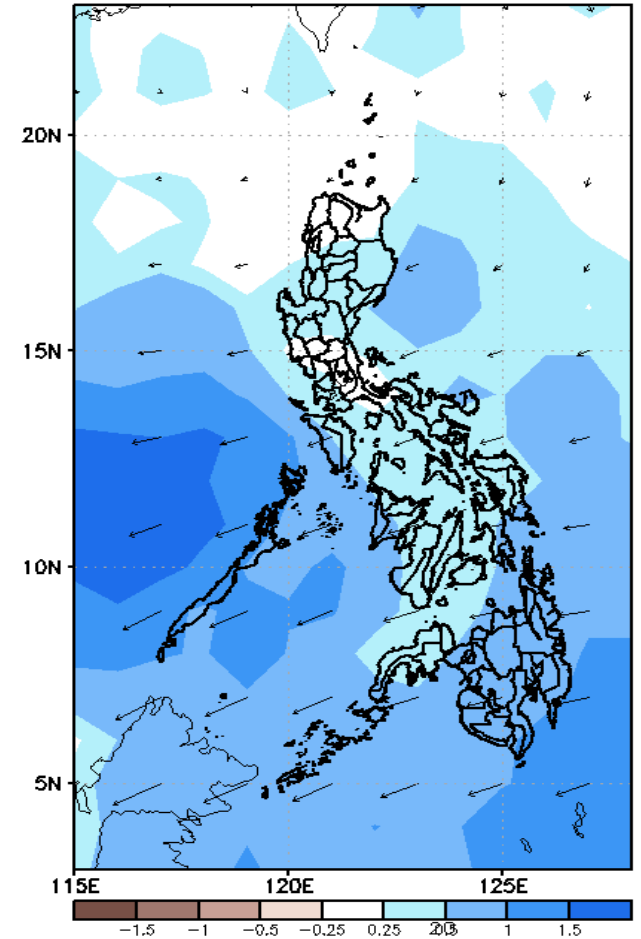
GEFS Week-2 850-hPa Divergence and Wind Anom  
Valid: 20210909 - 20210915



GEFS Week-2 700-hPa Divergence and Wind Anoma  
Valid: 20210909 - 20210915



GEFS week-2 200-hPa Divergence and Wind Anom  
Valid: 20210909 - 20210915

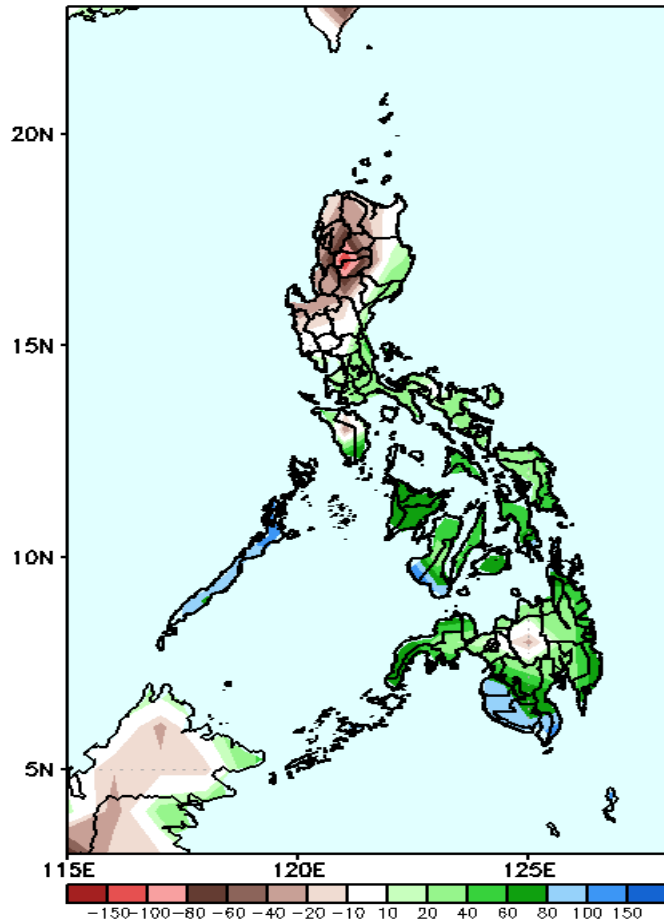


Upper and low level Divergence suggest likelihood of precipitation in most parts of the country. Southwest monsoon affecting the western section of the country while Easterlies affecting the remaining parts of the country attributing to light and moderate rains due to thunderstorms during the forecast period.

# Precipitation Anomaly and Exceedance Probability > 25/50 mm

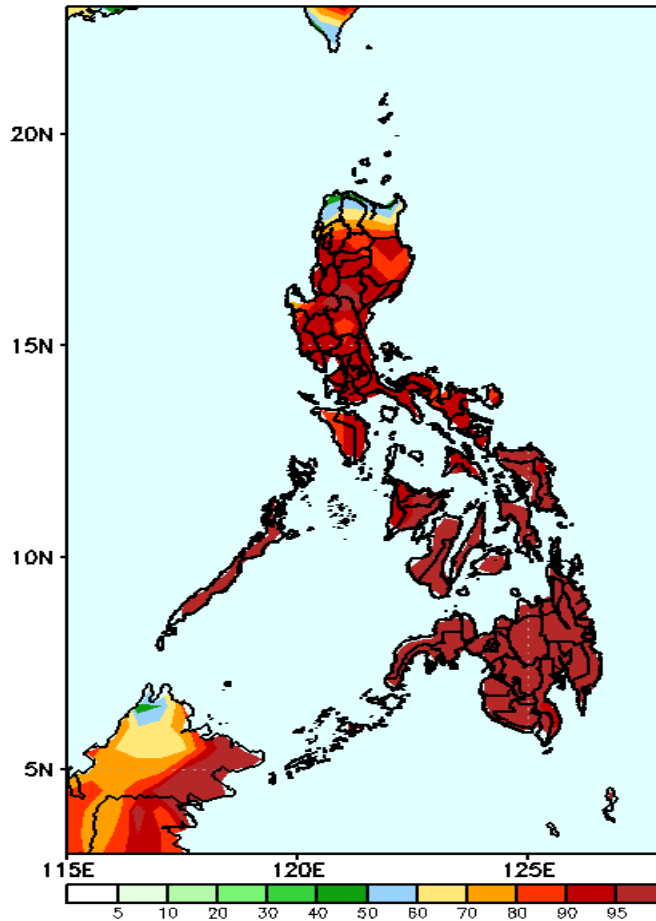
## Week 2: Sep 09-15, 2021

GEFS Week-2 Precip Anomaly  
Valid: 20210909 - 20210915



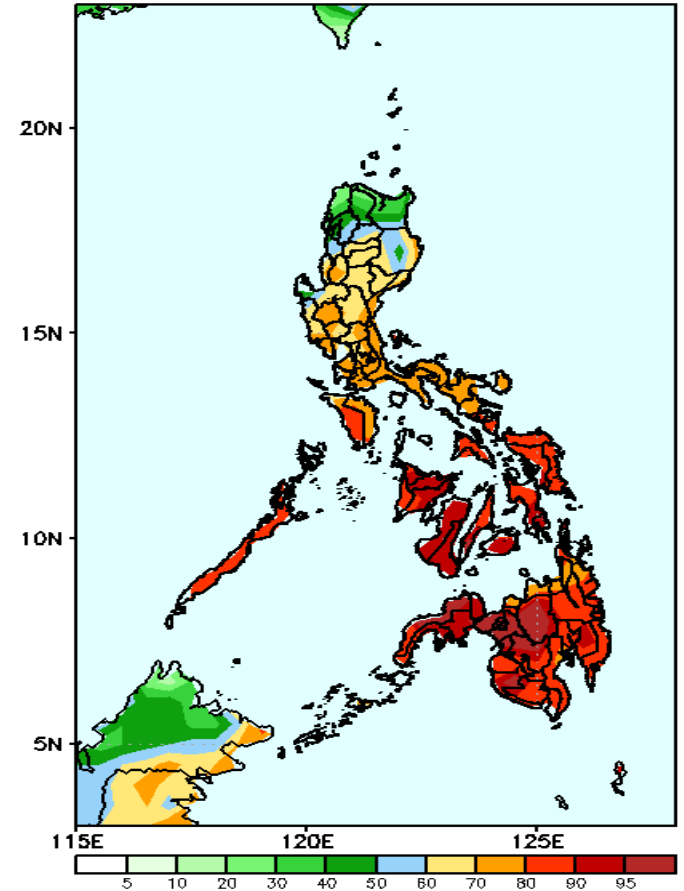
Increase of rainfall of 60-100mm is expected in most parts of the country except in Ilocos & Cordillera Region where there is 40-100mm rainfall deficit during the forecast period.

GEFS Week-2 Exceedance Prob. > 25mm  
Valid: 20210909 - 20210915



High probability of rainfall to exceed 25mm in most parts of the country is expected during the forecast period

GEFS Week-2 Exceedance Prob. > 50mm  
Valid: 20210909 - 20210915



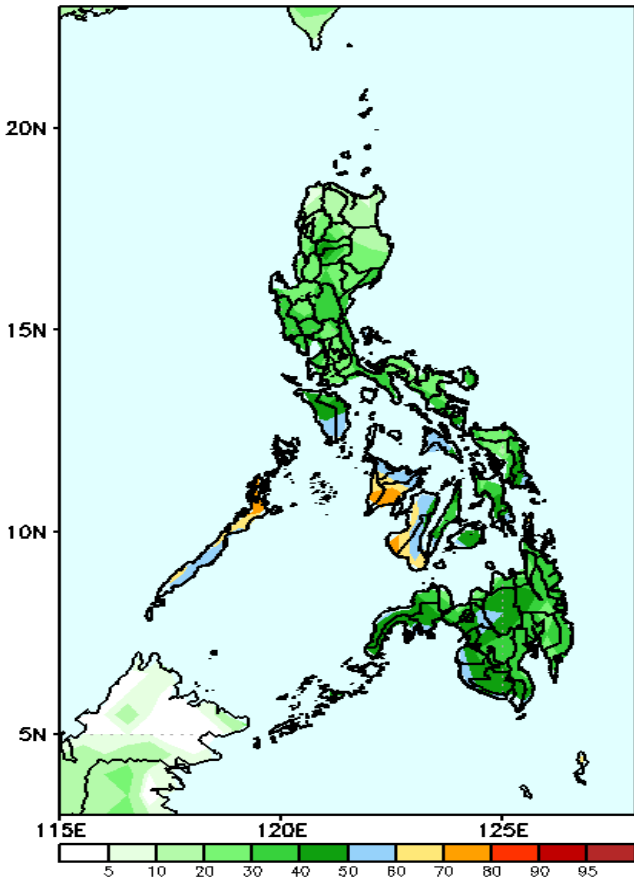
High probability of rainfall to exceed 50mm in most parts of the country except in Ilocos Norte, Apayao and Cagayan during the forecast period.



# Exceedance Probability > 100/150/200 mm

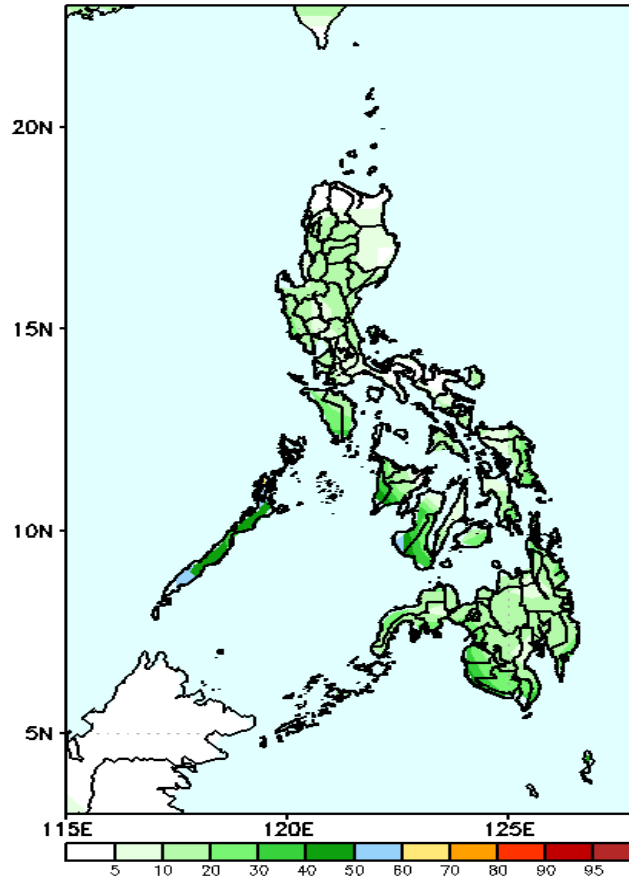
## Week 2: Sep 09-15, 2021

GEFS Week-2 Exceedance Prob. > 100mm  
Valid: 20210909 - 20210915



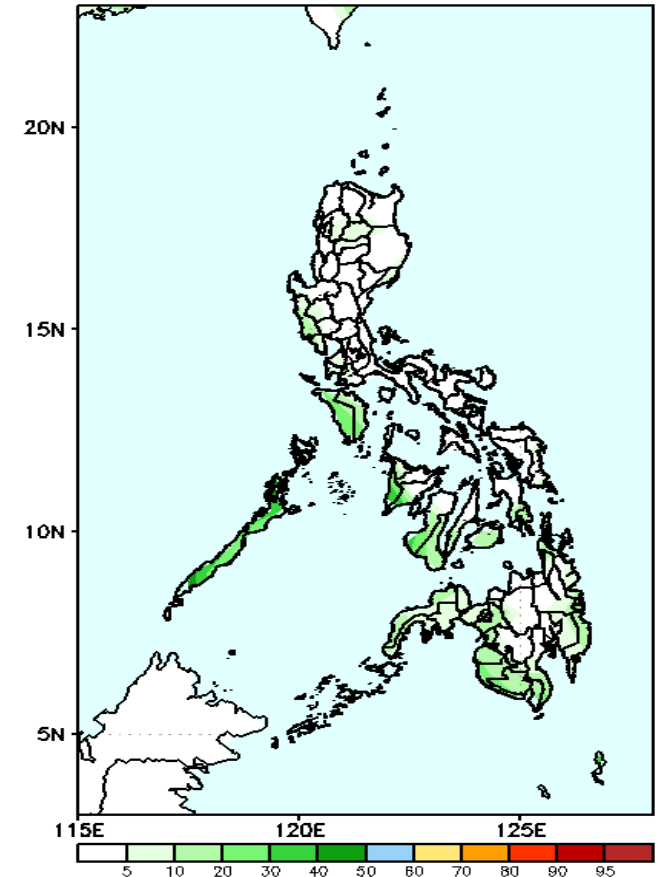
Less probability of rainfall to exceed 100mm in most parts of the country is expected except in some areas in western Visayas and Palawan where there is 60-90% chance during the forecast period.

GEFS Week-2 Exceedance Prob. > 150mm  
Valid: 20210909 - 20210915



Less probability of rainfall to exceed 150mm in most parts of the country is expected during the forecast period.

GEFS Week-2 Exceedance Prob. > 200mm  
Valid: 20210909 - 20210915

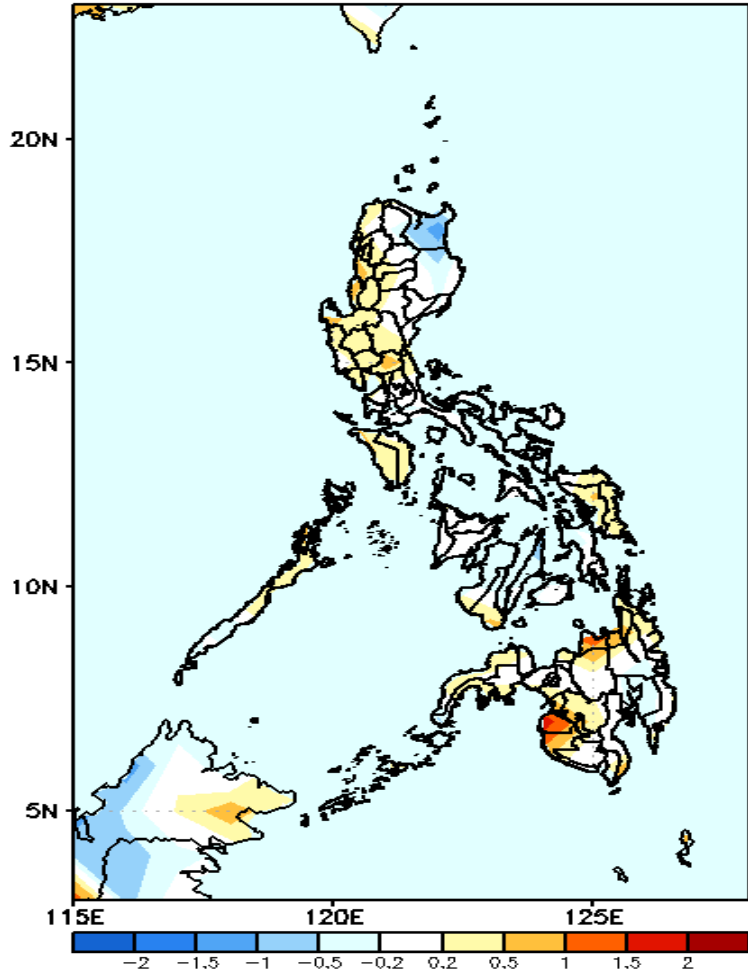


Less probability of rainfall to exceed 200mm in most parts of the country is expected during the forecast period.



# GEFS Week-1 & 2 Forecasts: T2m Anomaly

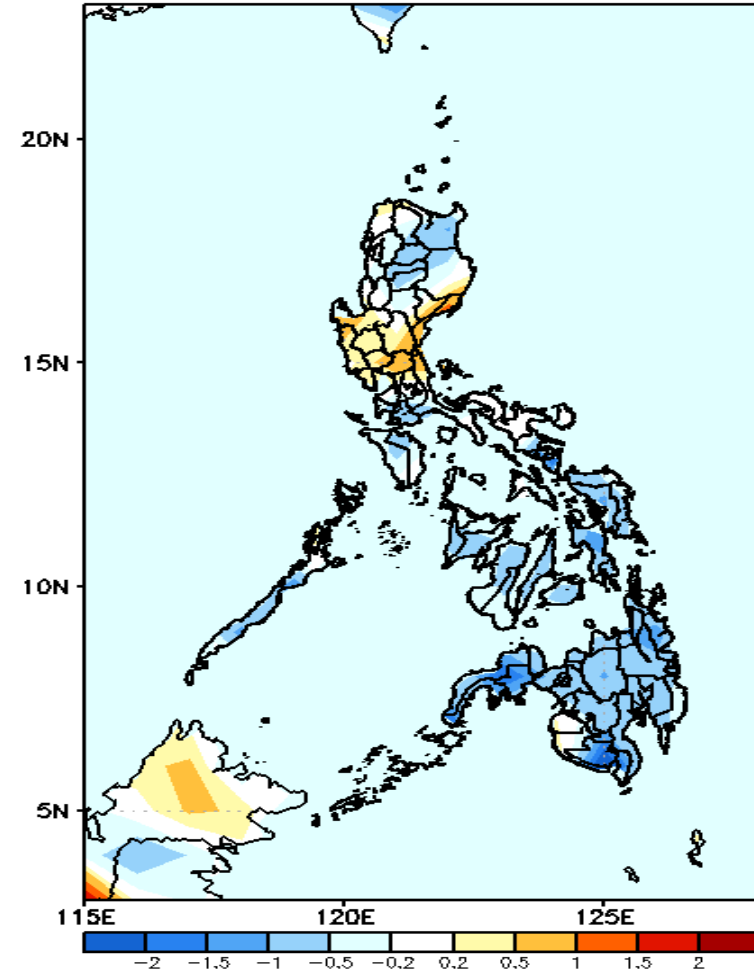
GEFS Week-1 T2m Anomaly  
Valid: 20210902 - 20210908



**2m Temperature Week 1: Sep 02-08, 2021**

Average to slightly warmer average surface air temperature will likely experience in most parts of the country except in Cagayan where slightly cooler surface temperature is expected during the forecast period.

GEFS Week-2 T2m Anomaly  
Valid: 20210909 - 20210915



**2m Temperature Week 2: Sep 09-15, 2021**

Slightly cooler to cooler than average surface air temperature will likely experience in most parts of the country except in Central Luzon and Rizal where slightly warmer to warmer surface air temperature is expected during the forecast period.